



Better Homes! Better Prices!



BRADFORD

4 Bed, 2.5 bath
2372 sq. ft.



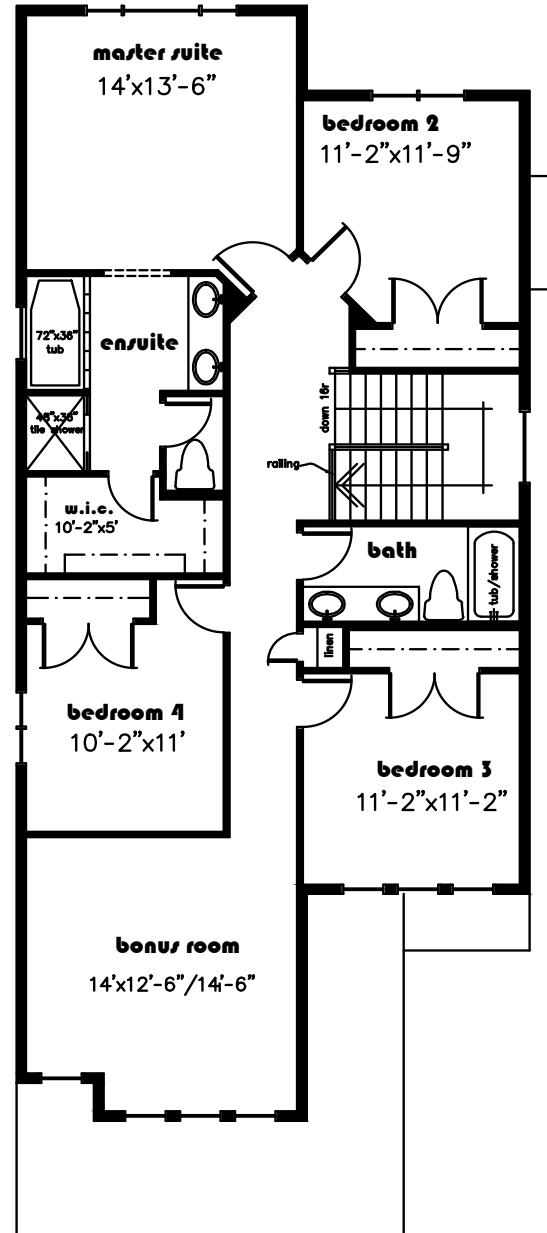
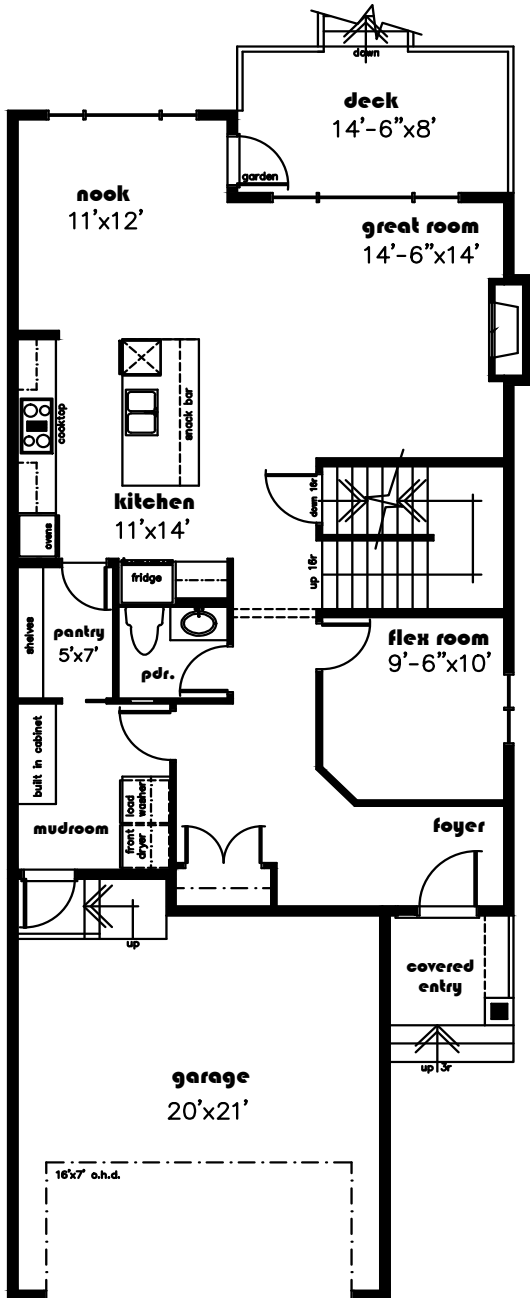
IT FEATURES

- 60" Electrical fireplace in Great Room
- Main floor den/flex room
- Walk through pantry
- Kitchen is chef's dream with large island and lots of cabinets
- Luxurious master suite with huge walk in closet
- large bonus room
- 9 ft. main & basement ceiling
- Main floor laundry, spacious mud room
- Pressure treated rear deck Optional

www.blackstonehome.ca



BRADFORD 2372 sq. ft.



Floor plans & dimensions shown are approximate and subject to change without notice. Brochure cannot be used for construction.