



Better Homes! Better Prices!



KINGSTON

4 Beds, 3 baths
1406 sq. ft. - Main
1127 sq. ft. - Basement
Total - 2533 sq. ft.

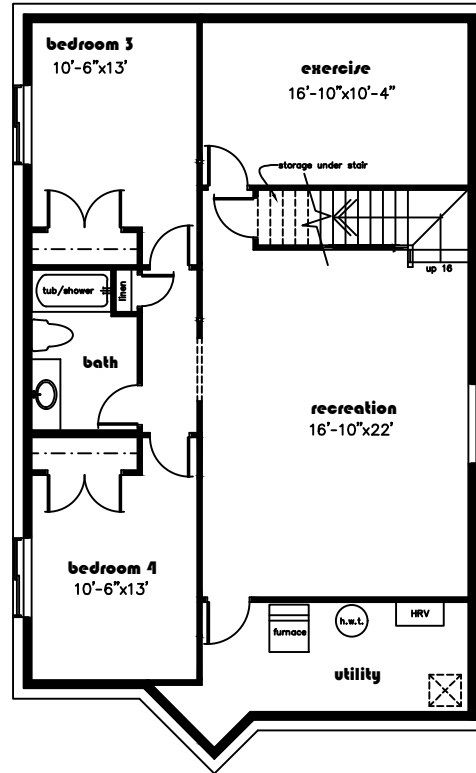
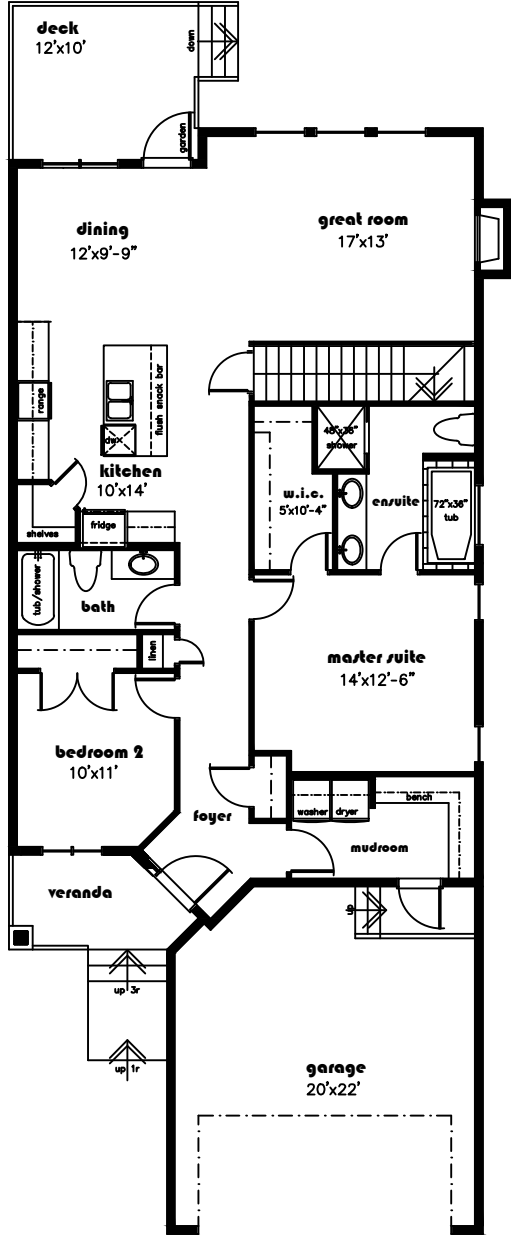
IT FEATURES

9 feet main floor ceiling, 9 feet basement
Front verandah on the entrance
Spacious foyer
Main floor mudroom with laundry room
Kitchen is chef's dream with lots of cabinets, spacious pantry and large island
Luxurious master suite with walk in closet
Pressure treated rear deck optional
Optional Basement has huge rec room, 2 more bedrooms, full bath & exercise room

www.blackstonehomes.ca



KINGSTON 1406 sq. ft.



basement 1127

main floor 1406

all room sizes are approximate

Floor plans & dimensions shown are approximate and subject to change without notice. Brochure cannot be used for construction.